

STARCH TECHNOLOGY



KMC is a cooperative of more independent potato starch factories. The factories produce starch and KMC sells it. KMC also runs the modification plant.

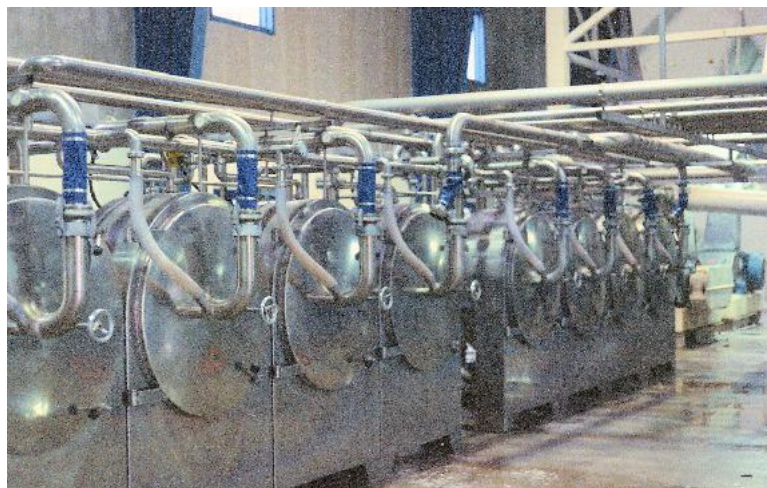
Supporting "The KMC World" computing system gave deep insight in company affairs. It was easy to observe, that KMC did not benefit from EEC starch export subsidies due to lack of starch. When I suggested doing something everybody found it a good idea.

I proposed a new limited company "Dansk Stivelseindustri Ingeniørforretning" (later renamed to "KMC Engineering" to carry out the necessary expansions. The factories and KMC shared half and a friend of mine Niels Jørgensen and I shared the other half. Niels had a mechanical workshop and some technical know how. He had, however, to leave the company after a while because he acted too selfish.

In Brande we rented a 1000 sqm. facility with room for mechanical workshop, pilot plant and administration.

An electrical limited company "EPN Electric A/S" was founded together with a couple of friends with equal shares to all three. This company did all the electrical installations and introduced computer control systems and automatics.

During the following five years each of the factories got expanded. In total we tripled the production capacity and the Danes now produced more starch per capita than any other nation. The expansion was successful but the EEC was not happy, because the export subsidies draw hard on taxpayers' money and eventually EEC introduced production quotas putting an end to the expansion.



Using sub suppliers we managed to keep the engineering staff low. When the quotas put an end to the Danish adventure we wanted to go abroad, but the starch people did not want to join us. 1994 I sold my shares to KMC and we moved to the Science Park in Aarhus and continued operations as a 100% family owned operation. KMC Engineering collapsed and was wound up same year.