

INVENTIONS ON DEMAND

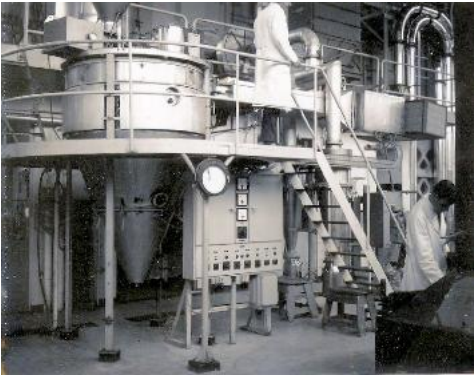


Figure 2 TNO Spray tower.

Citation from the Conclusion:

"It has been proved that sucrose syrups of the type virgin cane syrup, refined syrups and solutions of raw sugar can be transformed into granular products containing all components of solids in the original syrup. The applied "air crystallization" process may be carried through under circumstances which correspond closely to the production of glucose sugar. The results of the tests are interpreted in this way, that total sucrose products of the mentioned types of syrup can be produced in an industrial plant in a continuously labour saving process ..."



Figure 3 Nizo Tower

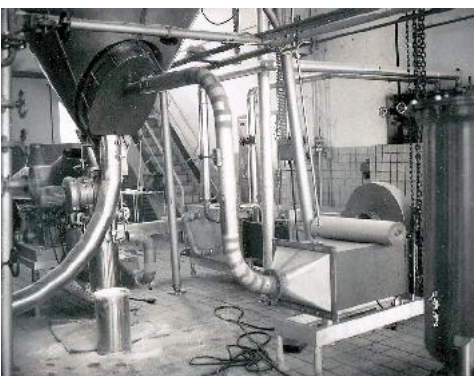


Figure 4 Nizo Tower

Vice president Dr. P. L. Veltman, Grace supervised all pilot plant tests and we got acquainted. Private he was an active yachtsman. He was a fine mentor. As an experienced manager and as an American he taught me a lot. One peculiar thing. He taught me to travel light. Each time boarding an airplane, I recall him, because never since I have lost luggage in an airport or wasted time at the baggage belt - never carrying more than a cabin bag.