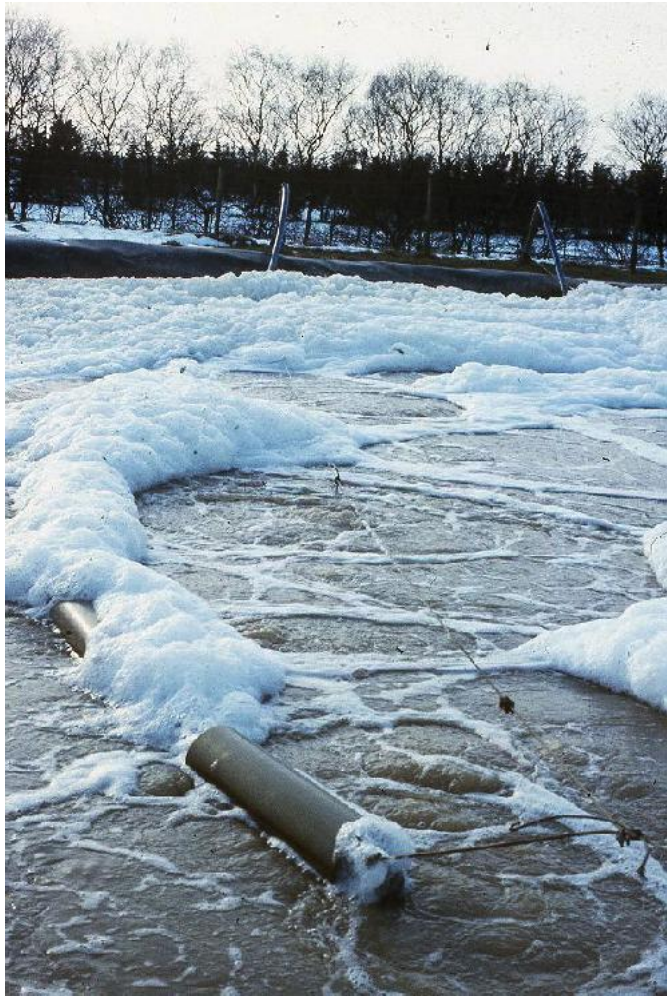


STARCH TECHNOLOGY

Averaging outlets over time got Kaj off the hook, but the municipalities still had a dead sewage plant and did not want a repetition. Therefore new installations in the factory were required and the waste water must be pre-treated to bring down the carbohydrate responsible for the biological oxygen demand (BOD).

A big Danish company, Krüger, thought they were going to supply the new biological treatment plant, but I offered to do it cheaper and on better terms.



Sewage Plant

Knowing practical nothing about waste water systems and refining a small one person equivalent bench scale biological treatment plant was build at home in our garage. An aquarium pump provided the air, oxygen and pH detectors were attached to my computer and the installation ran continuously for a couple of month providing me with enough data to design the plant.



When the plant was established monitoring the operation online on a dial-up line was enabled.